

# ***Electric Actuator NA Series*** ***Built-in Super Capacitor Type***





### NA Built-in Super Capacitor Type

Anodized with aluminium alloy and powder coating(Polyester, TGIC-Free) is followed for corrosion protection.

The enclosure is rated IP67 and sealed with o-rings. It enables actuators to be installed outside. (IEC IP67, NEMA 4 and 6)

20W space heater is provided to protect internal components from condensation.

The gears are self-locking mechanically.

Torque switches (Open/Close) are provided to protect the actuator and its application electrically and mechanically from overload.

NA series with SCP are operated by the power of super capacitor in case of power failure.

Actuators can stop at current position or they can be driven to open or close position depending on user's requirement.

When a charge lamp blinks super capacitor must be charged. If super capacitor is fully charged it goes off.

### Performance

Model	Output Torque		Operating Time(90°) (Sec)	Rated Current (A)		Motor Class (W)	Number of Handle Turns	Weight kg
	Kg.m	N.m		110V	220V			
NA006	6	60	15	0.6	0.3	15	8.5	13.5
NA009	9	90	17	0.8	0.37	25	8.5	13.5
NA015	15	150	17	1	0.43	40	10	16
NA019	19	190	19	1	0.43	40	10	16
NA028	28	280	22	2.25	1.13	40	12.5	18.5

### Standard Specification

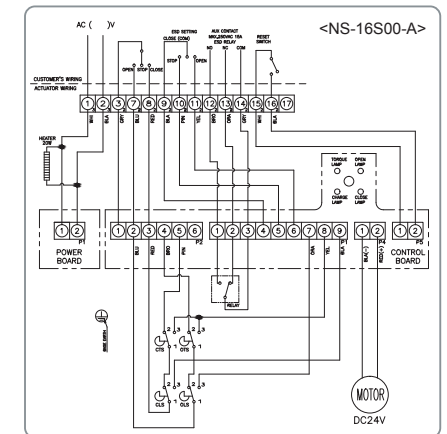
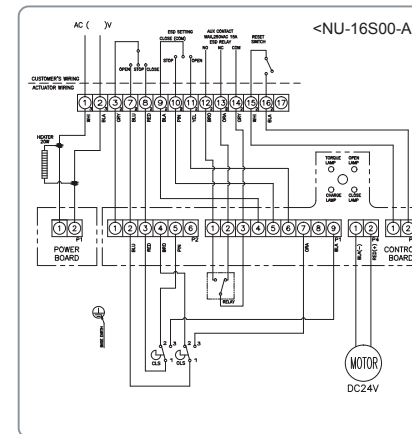
Enclosure	Watertight Ingress Protection 67 Nema 4 and 6		
Ambient Temperature	-20°C to +70°C	Self Locking	Provided by means of Worm Gearing
Power Supply	95~260VAC 50/60Hz	Mechanical Stops	External Adjustable Screws
Limit Switches	2 Open / Close, 250VAC 15A Rating	Space Heater	20W
Torque Switches	2 Open / Close (Except NA006, NA009)	Cable Entries	2-PF 3/4" (Option: M20xPitch1.5, NPT 3/4")
Stall Protection	Built - in Thermal Protection	Lubrication	Shell Gadus S2 V220 2
Travel Angle	90±5°C	Material	Aluminium
Indicator	Continuous Position Indicator	Surface Treatment	Anodizing
Manual Override	Hand / Auto Decoupling Mechanism	External Coating	Polyester(TGIC-Free)

### Built In Super Capacitor Specification

Power Supply	AC90V ~ 250V 50/60Hz	Number of Emergency Operating	1 travel (Open to Close or Close to Open)		
Charging Voltage	26.5V		Charging Current	110V	1.1A
Charging Time	NA006-019 3 min 30 sec			220V	0.45A
	NA028 2 min		110V	2.2A	
Weight	0.7kg		220V	1.1A	

⚠ Charge up a super capacitor before use. If the capacitor is not fully charged, emergency operating is not available.

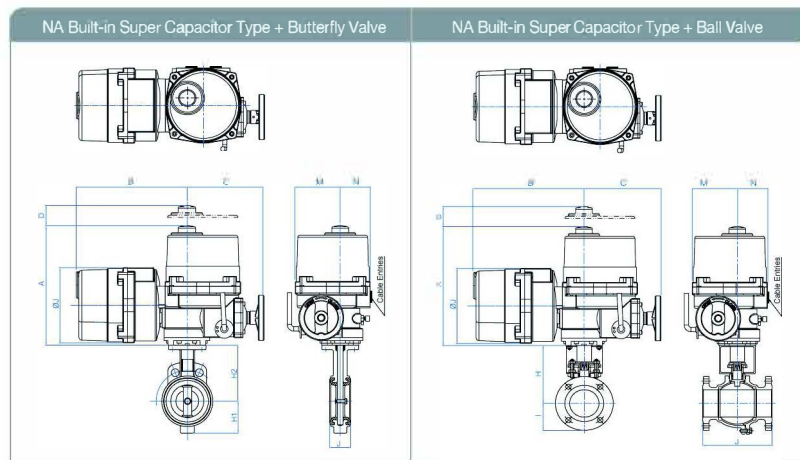
### Standard Wiring



### Dimension

	NA006	NA009	NA015	NA019
A	6		6	
B	244		265	
C	174		184	
D	424		455	
E	120		139	
F	68		85	
G	188		224	
H	270		274	
H1	108		108	
I	5		5	
ØJ	170		170	
Base ISO5211	F07 Ø70 / 4-M8 DP12 MAX Ø22		F07 Ø70 / 4-M8 DP12 F10 Ø102 / 4-M10 DP15 MAX Ø22	
Cable Entries	2-PF3/4" ( Option : M20xPitch1.5, NPT3/4")			

**NA Built-in Super Capacitor Type + M.O.V Dimension**



**NA Built-in Super Capacitor Type + Butterfly Valve**

Dimension(mm)											
Size	Model	A	B	C	D	ØJ	M	N	H1	H2	J
80A	NA006	270	250	174	108	170	120	68	78	136	46
100A	NA009	270	250	174	108	170	120	68	89	157	46
125A	NA015	274	271	184	108	170	139	85	109	175	52
150A	NA019	274	271	184	108	170	139	85	124	195	56

\* Note : Makers standard 220V.

**NA Built-in Super Capacitor Type + Ball Valve**

Dimension(mm)											
Size	Model	A	B	C	D	ØJ	M	N	H	I	J
40A	NA006	270	250	174	108	170	120	68	196	70	165
50A	NA009	270	250	174	108	170	120	68	204	72.5	178
65A	NA015	274	271	184	108	170	139	85	216	87.5	190
80A	NA019	274	271	184	108	170	139	85	236	92.5	203

\* Note : Makers standard 220V.