

ELECTRIC LINEAR ACTUATOR NL SERIES

<http://www.actuator-solutions.com>



Performance

Type	Max Output Thrust	Speed (50/60Hz)	Stroke	Duty Cycle	Rated Current										Motor		Number of Handle Turns	Valve Stem Threads (Max)	Pillar Threads	PCD in Flange	Weight
					110V		220V		380V		440V		DC 24V								
					50Hz	60Hz	50Hz	60Hz	50Hz	60Hz	50Hz	60Hz		W	Class	mm					
NL04	4	0.7/0.83	40	50	0.46	0.43	0.28	0.27	0.11	0.09	0.1	0.09	1.65	15	F (150°)	190	M20	M16	100	16	
NL06	6	0.7/0.9	40	50	0.73	0.72	0.38	0.37	0.14	0.12	0.12	0.11	1.87	25	F (150°)		M20	M16	100	16	
NL08	8	0.7/0.8	50	50	1.39	1.37	0.73	0.7	0.22	0.21	0.21	0.19	2.9	40	F (150°)	250	M20	M16	100	18	
NL10	10	0.7/0.8	50	50	1.52	1.5	0.79	0.75	0.25	0.24	0.23	0.21	4.02	40	F (150°)		M20	M16	100	18	
NL20	20	0.85/1	100	50	1.9	1.95	1	1.5	0.33	0.33	0.25	0.32	9.45	60	F (150°)	475	M24	M20	150	31	
NL25	25	0.72/0.87	100	50	2.53	3.25	1.05	1.45	0.45	0.45	0.54	0.45	-	90	F (150°)	550	M24	M20	150	31	

※ NL20 DC24V MOTOR: 40W

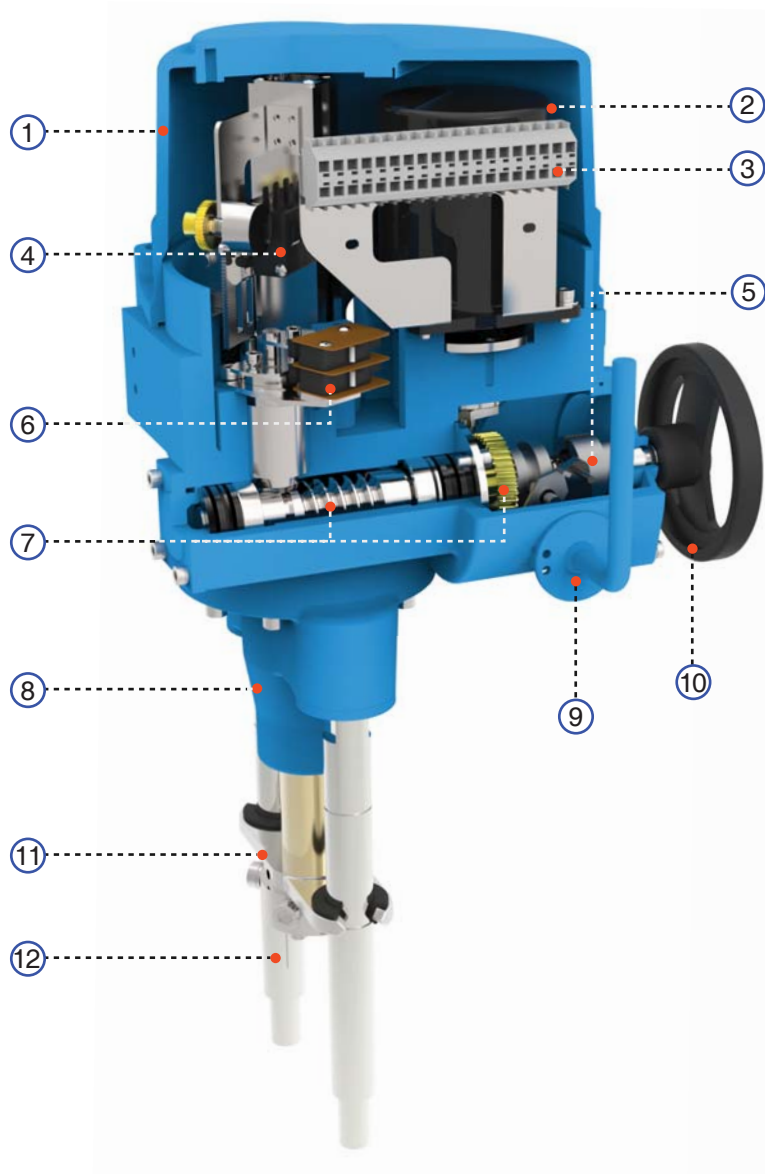
Standard Specification

Enclosure	Watertight Ingress Protection 67 Nema 4 and 6 (Option : IP68, Ex d IIB T4)
Ambient Temperature	-20°C ~ +70°C 150°C/1hr
Power Supply	110 / 220V AC 50/60Hz , 380 / 440V AC 50/60Hz, Option : DC24V
Torque Switches	Open / Close Torque Switch (※Except : NL04 , NL06)
Limit Switches	Open / Close Limit Switch
Stall Protection	Thermal Protection (Open 150°C)
Indicator	Continuous Position Indicator
Manual Override	Hand / Auto Declutching Mechanism
Self Locking	Provided by Means of Worm Gearing
Space Heater	20W
Conduit Entries	Two PF 3/4" (Option : Two M20 Pitch 1.5 , Two NPT 3/4")
Lubrication	Shell Gadus S2 V220 2
Materials	Aluminium
Surface Treatment	Anodizing
External Coating	Polyester
Dielectric Strength	AC1800V / 1min
Insulation	DC500V more Than 100M Ohm

Optional Specification

E X P	Explosion Proof Ex d II B T4		
IP68	Watertight Enclosure IP68		
A L S	Auxiliary Open, Close Limit Switches		
A T S	Auxiliary Open, Close Torque Switches		
L C U	Local Control Unit		
P C U	Proportional Contact Unit (Modulation) Input : 4-20mA DC 1~5VDC, 2~10VDC, 0~5VDC, 0~10VDC Output : 4-20mA DC		
C P T	Current Position Transmitter / Output : DC 4-20mA		
P I U	Potentiometer 1 K Ohm		
I M S	Integral Motor Starter		
INTEGRAL			
STROKE	Standard Stroke	Option	
	NL04,06	40mm	Please consult manufacturer if stroke is different from standard specification.
	NL08,10	50mm	
NL20,25	100mm		

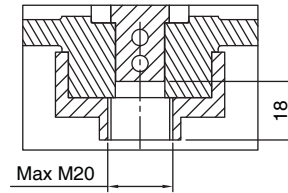
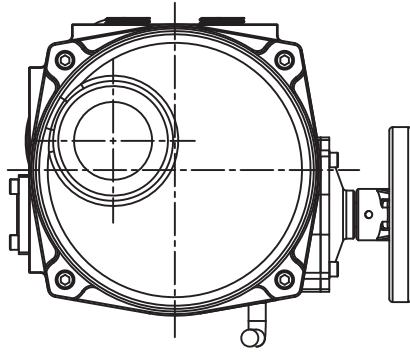
NL Series Configuration



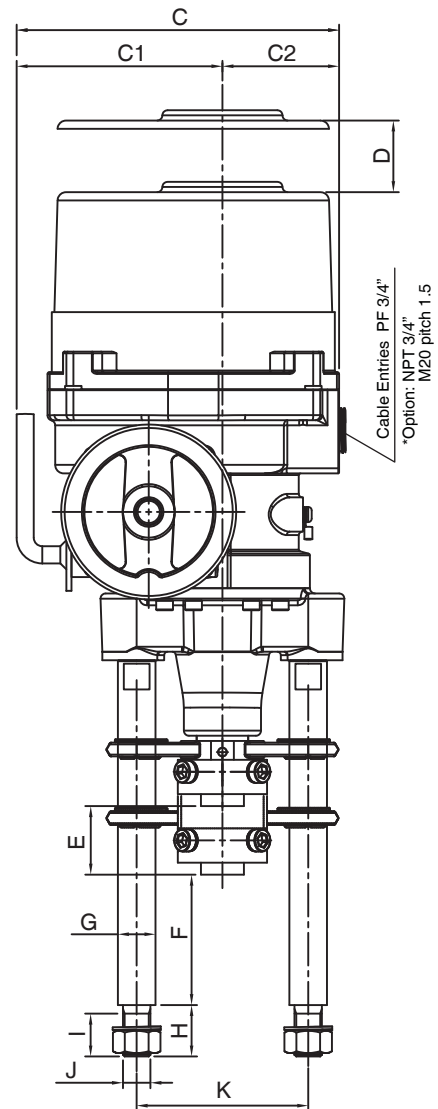
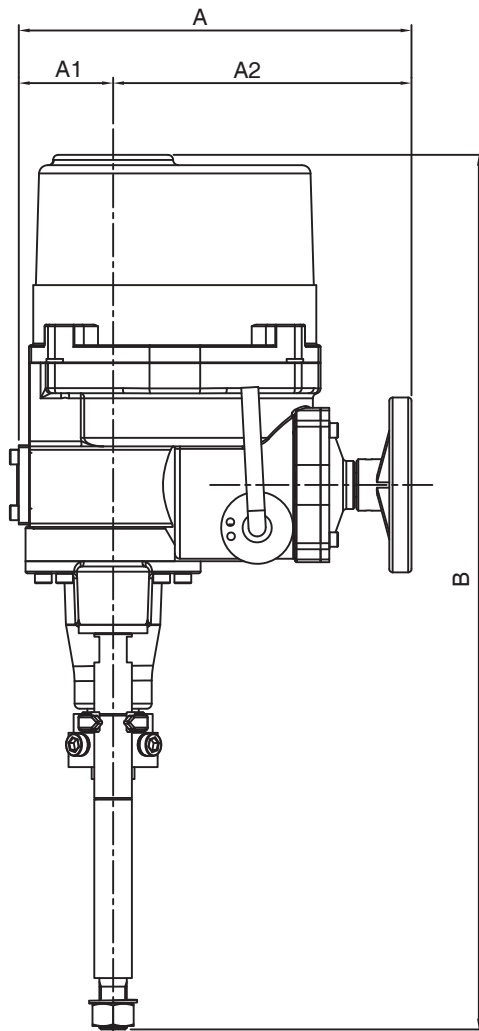
Features

- | | |
|--|---|
| <p>1 Top Cover</p> <p>2 Motor
Squirrel caged induction motor is totally enclosed type with high stall torque and low inertia force to suit seating/unseating of valves. Integral thermal protection to prevent damage to the single/three phase motor</p> <p>3 Terminal
Quality terminal block containing segregated power and control terminal are designed for use in high vibration environments.</p> <p>4 Limit Switch (Open, Close)</p> | <p>5 Manual Override (Hand/Auto Clutch System)</p> <p>6 Torque Switch (Open,Close)</p> <p>7 Worm, Worm Wheel precision machining of high-efficiency, low noise (50db or less), and compact, delivers greater Torque.</p> <p>8 Base</p> <p>9 Lever</p> <p>10 Handle Wheel</p> <p>11 Indicator</p> <p>12 Pillar</p> |
|--|---|

Dimension

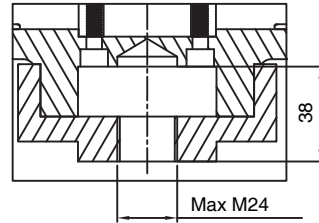
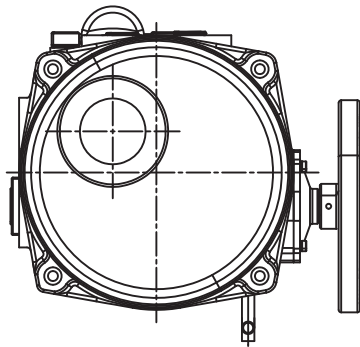


Bushing

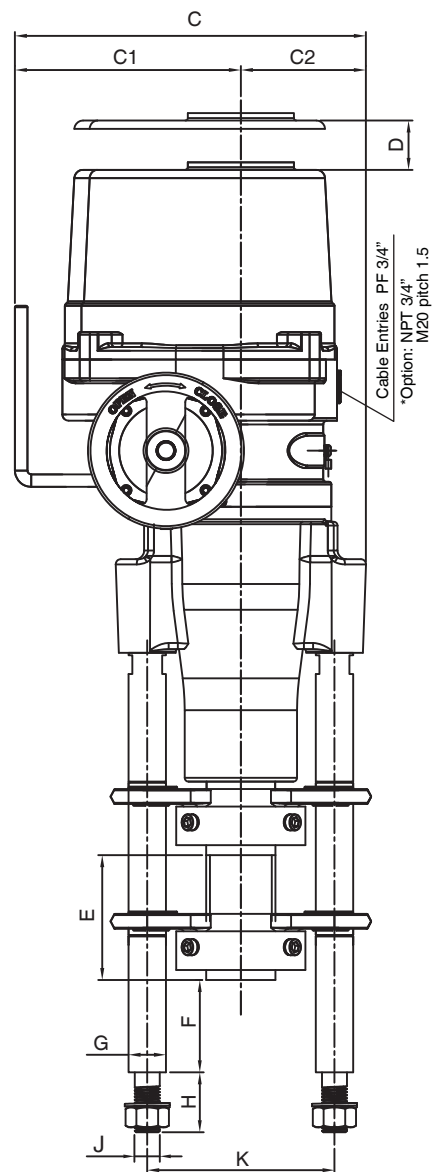
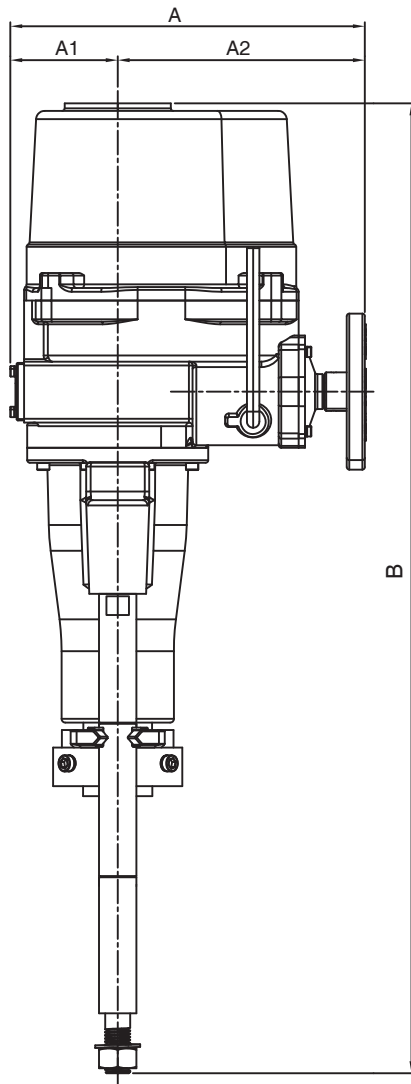


Type	A	A1	A2	B	C	C1	C2	D	E	F	G	H	I	J	K
NL04, NL06	229	55	174	510	188	120	68	108	40	76	∅ 22	30	25	M16	100
NL08, NL10	260	76	184	525	216	138	77	108	50	64	∅ 22	30	25	M16	100

Dimension



Bushing

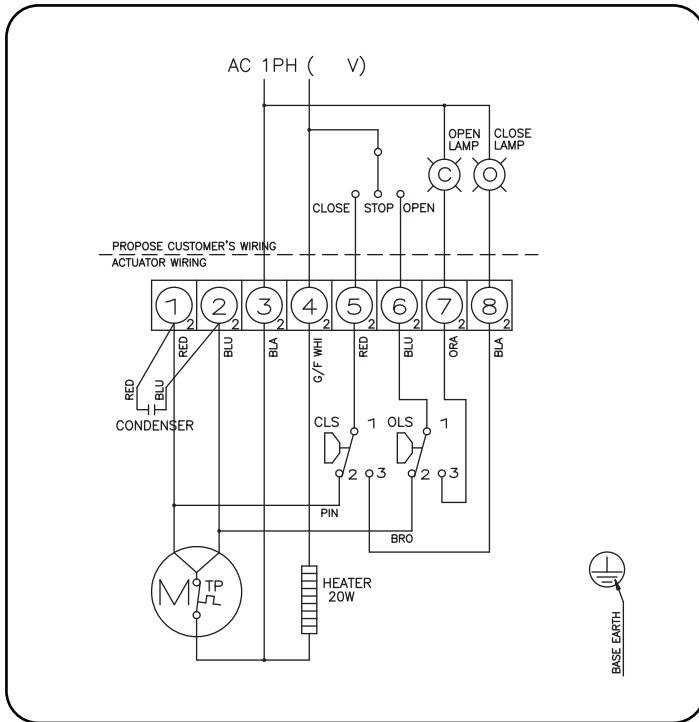


Cable Entries PF 3/4"
*Option: NPT 3/4"
M20 pitch 1.5

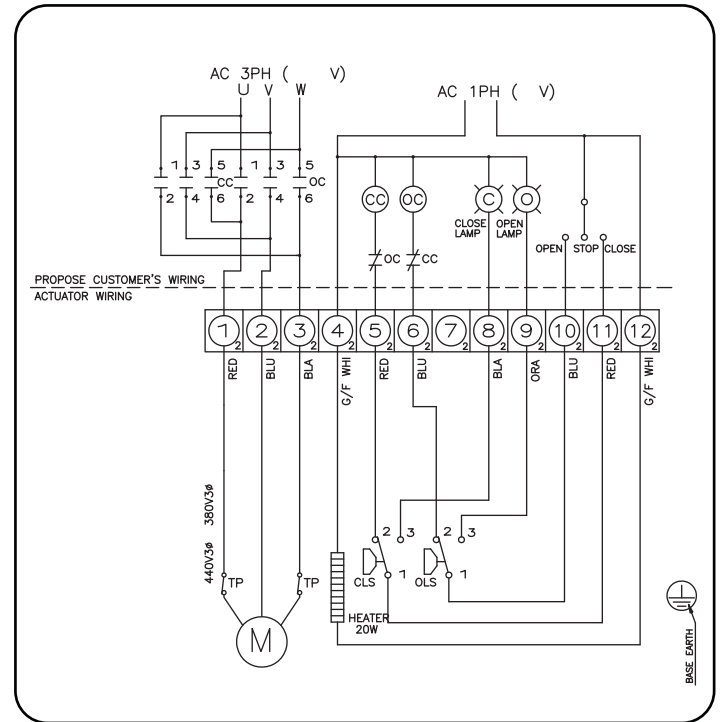
Type	A	A1	A2	B	C	C1	C2	D	E	F	G	H	J	K
NL20, NL25	284	86	198	777	281	181	100	130	100	74	∅ 30	48	M20	150

NL04, NL06 Wiring

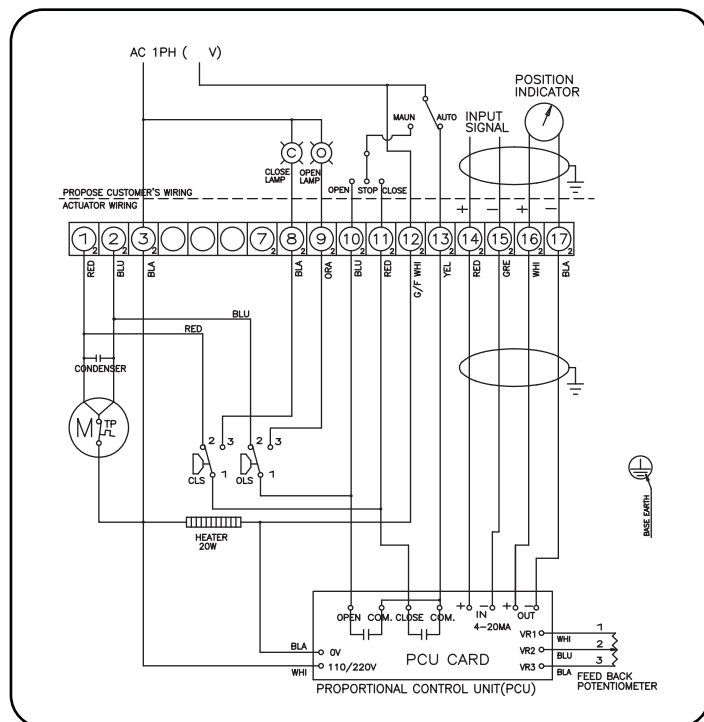
- On,Off Type 1PH 110 / 220 VAC (LU-11000-C)



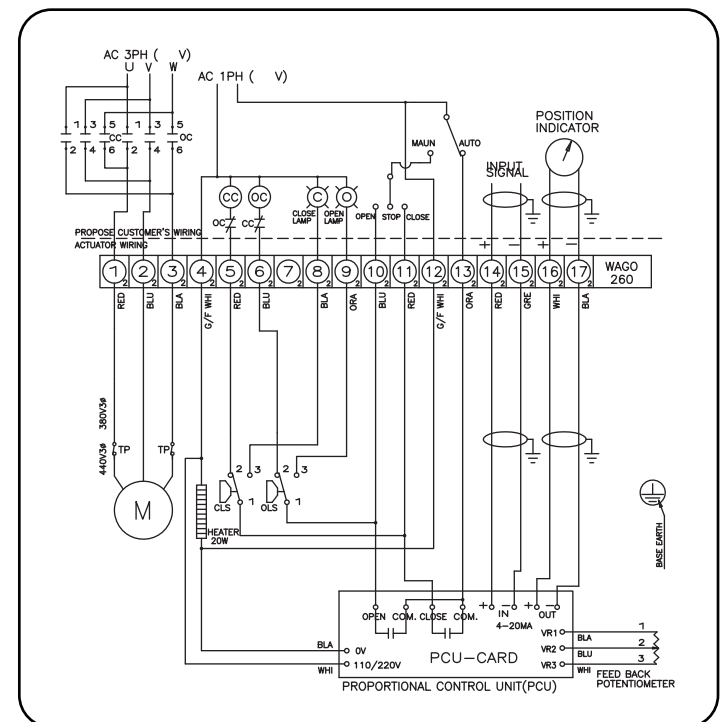
- On,Off Type 3PH 380 / 440 VAC (LU-31000-C)



- Modulating Type 1PH 110 / 220 VAC (LU-15000-C)

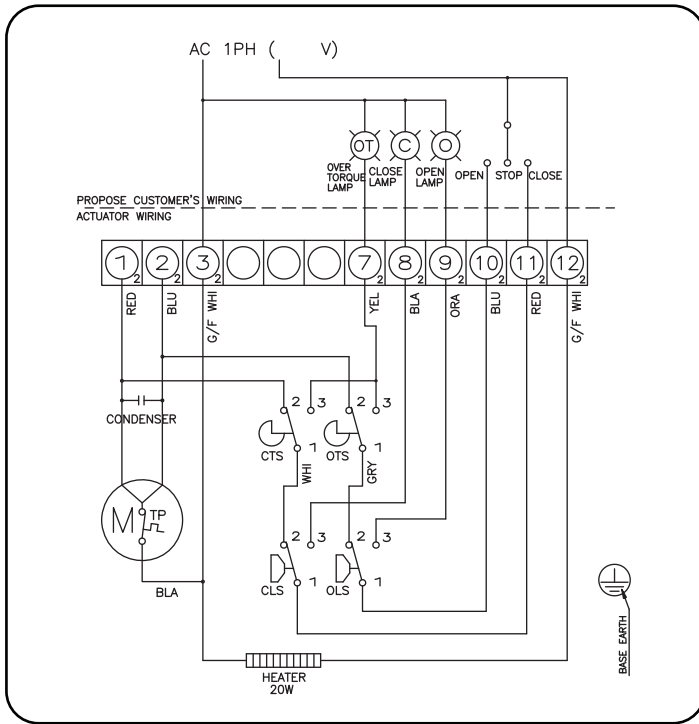


- Modulating Type 3PH 380 / 440 VAC (LU-35000-C)

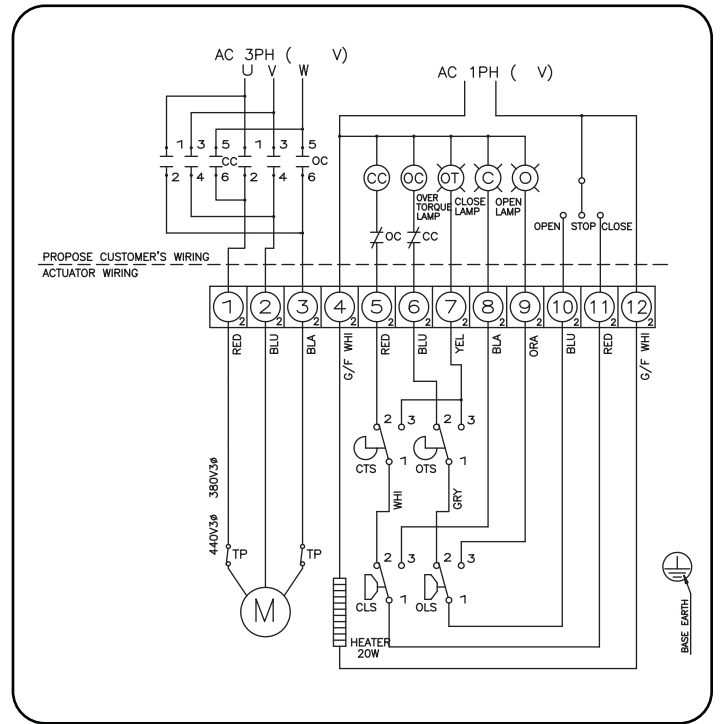


NL08, NL10, NL20, NL25 Wiring

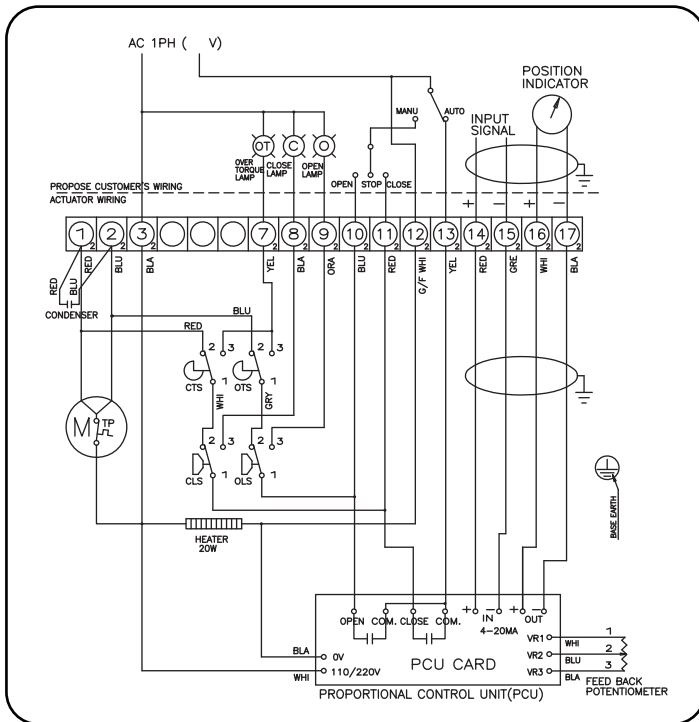
- On,Off Type 1PH 110 / 220 VAC (LS-11000-C)



- On,Off Type 3PH 380 / 440 VAC (LS-31000-C)



- Modulating Type 1PH 110 / 220 VAC (LS-15000-C)



- Modulating Type 3PH 380 / 440 VAC (LS-35000-C)

