

ELECTRIC ACTUATOR SA05X, 09X (EXP Type)

- Flameproof Enclosure , Ex d IIB T4
- Engineered to be lightweight and compact for greater versatility.
- The unique housing design allows various options to be installed without the additional cost of an external enclosure.
- To help protect the components and extend the actuator's life, a 5-watt anti-condensation heater is included as standard.
- Included with the end of travel motor switches are two additional dry-contacts for auxiliary indication.
- A thermal protector is provided to protect the motor from over heating.
- The worm gear drive eliminates the possibility of back drive and the need for motor brakes.
- Designed for mounting in any orientation.
- In case of a power loss, the manual over-ride is provided for positioning the valve.
- 3 ISO mounting pads are provided for greater flexibility.



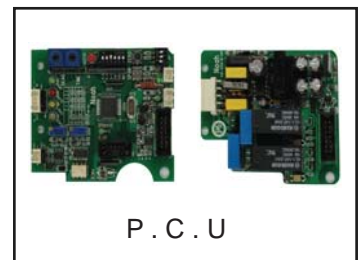
SA05X , 09X

PERFORMANCE

Model	Output Torque		Operating Time (90°)				Motor Class (W)				Rated Current (A)				Duty Cycle		Number of Handle Turns	Weight kg		
			1 Phase(AC)		DC		1 Phase(AC)		DC		1 Phase(AC)		DC							
	Kg.m	N.m	60Hz	50Hz	12V	24V	24V	110V	220V	12V	24V	24V	110V	220V	12V	24V			S2 (min)	S4 (%)
SA05X	5	50	14	17	11	10	15	6	6	6	15	1.8	0.35	0.23	3.2	1.8	15	50	6	5
SA09X	9	90	26	32	25	22	15	6	6	6	15	2.1	0.35	0.25	3.4	2.1	15	30	4.5	5

OPTION

		SA05X	SA09X
IP68	1Bar 72H	●	●
P . I . U	Potentiometer Unit (1K-Ohm)	●	●
C . P . T	Current Position Transmitter Output DC 4-20mA	●	●
P . C . U	Proportional Control Unit Input : DC 4-20mA, 2-10V, 0-5V, 0-10V, 1-5V Output : DC 4-20mA	●	●

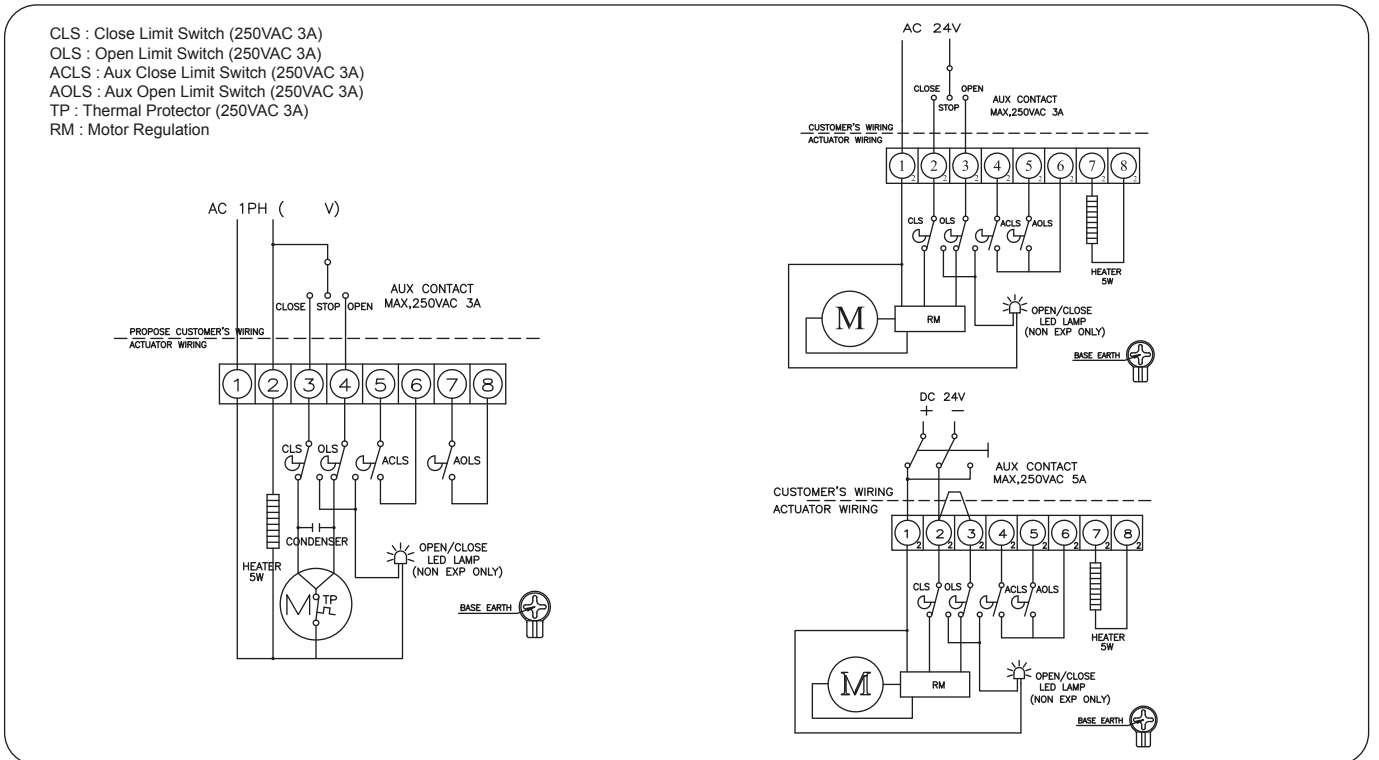


P . C . U

STANDARD SPECIFICATION

Enclosure	Weatherproof enclosure IP67 Nema 4 and 6 , Ex d IIB T4 (Flameproof Enclosure)		
Ambient temperature	-20°C to 55°C	Power supply	AC 110/230V 1PH ±10% 50/60Hz, DC24(AC24V)
Limit switches	2 Open/Close + Dry contact 2 Open/Close	Travel angle	90°C ± 5° (extention : upto 270°)
Manual operation	By L-wrench (6mm hexagon)	Self locking	Provided by means of worm gearing
Space heater	5 W (110/230VAC, 24VDC)	Cable entries	2-M20, 2-NPT1/2"
Lubrication	Shell Gadus S2 V220 2	Consist of Materials	Steel, Aluminium alloy, bronze
Surface treatment	Anodizing	External coating	Polyester (TGIC-free)

STANDARD WIRING



DIMENSION

